

VK Lite-N

Video Wall Controller

Powerful Video and Image Processing Device





VK Lite-N

VK Lite-N Series video wall controller is new generation professional video image processing product which is based on the development of multi-windows, ultra-high definition and visual display control technology. Meanwhile, VK Lite-N series controller supports multiple services, density of I/O interfaces and long term reliability. It is an all-in-one product support main stream input interface processing, IP-Video Decoding, Scrolling text, Scene management, User management and other advanced applications to meet a variety of professional system application requirements.



VK Lite-N Series

Video Wall Controller

FEATURES

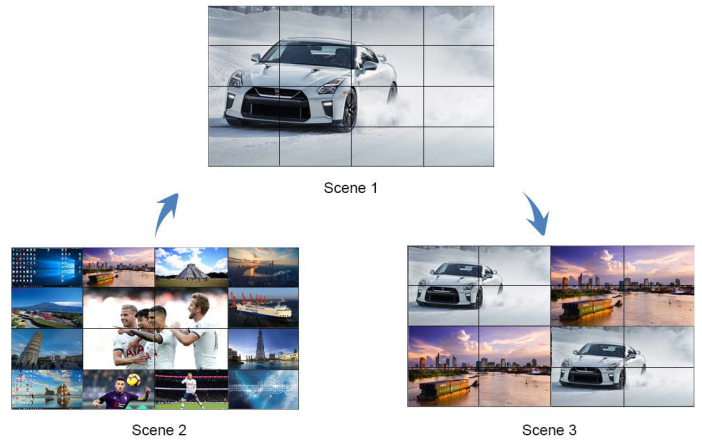
- Pure-hardware FPGA Array, modular design, parallel video processing hardware systems;
- Hot-swappable for I/O modules, control modules, redundant power supply, easy to upgrade and maintenance;
- VGA, DVI, HDMI, CVBS, SDI, HDbaseT, IP-Video input sources and DVI, HDMI, SDI, HDbaseT output;
- 4K@30Hz HDMI input, HDCP2.0 for HDMI input and output;
- Opening 2 windows on each one screen;
- Up to 4 video wall groups control on single controller;
- Scene management, including save, switch, recall, recycle;
- Input source previewing and video wall content monitoring;
- Variety of control methods such as RS232, Network and compatible with third party control system;
- Multi-user control management, software can be set through the operation authority, according to the authority level to develop different operating functions, different levels, different operating privileges, and can be set at any output authority range;
- C/S visualization control platform, support roaming, overlay, zoom in/out, multi-window switching;
- Picture-in-picture, signal clip and a variety of display modes such as split screen, full screen and combination screen;
- EDID, customize the output resolution according to the physical resolution of the display system;
- Advanced image decoding technology, compatible with a number of manufacturers' IPC signal and seamless access with variety of resolutions such as 1080P, 720P, etc.

RELEVANT FUNCTION INDICATION

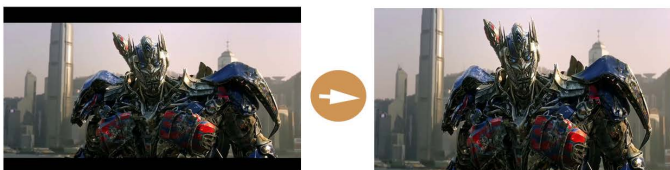


INPUT

- 4K input 3840 x 2160 @ 30Hz



- Scene Switching

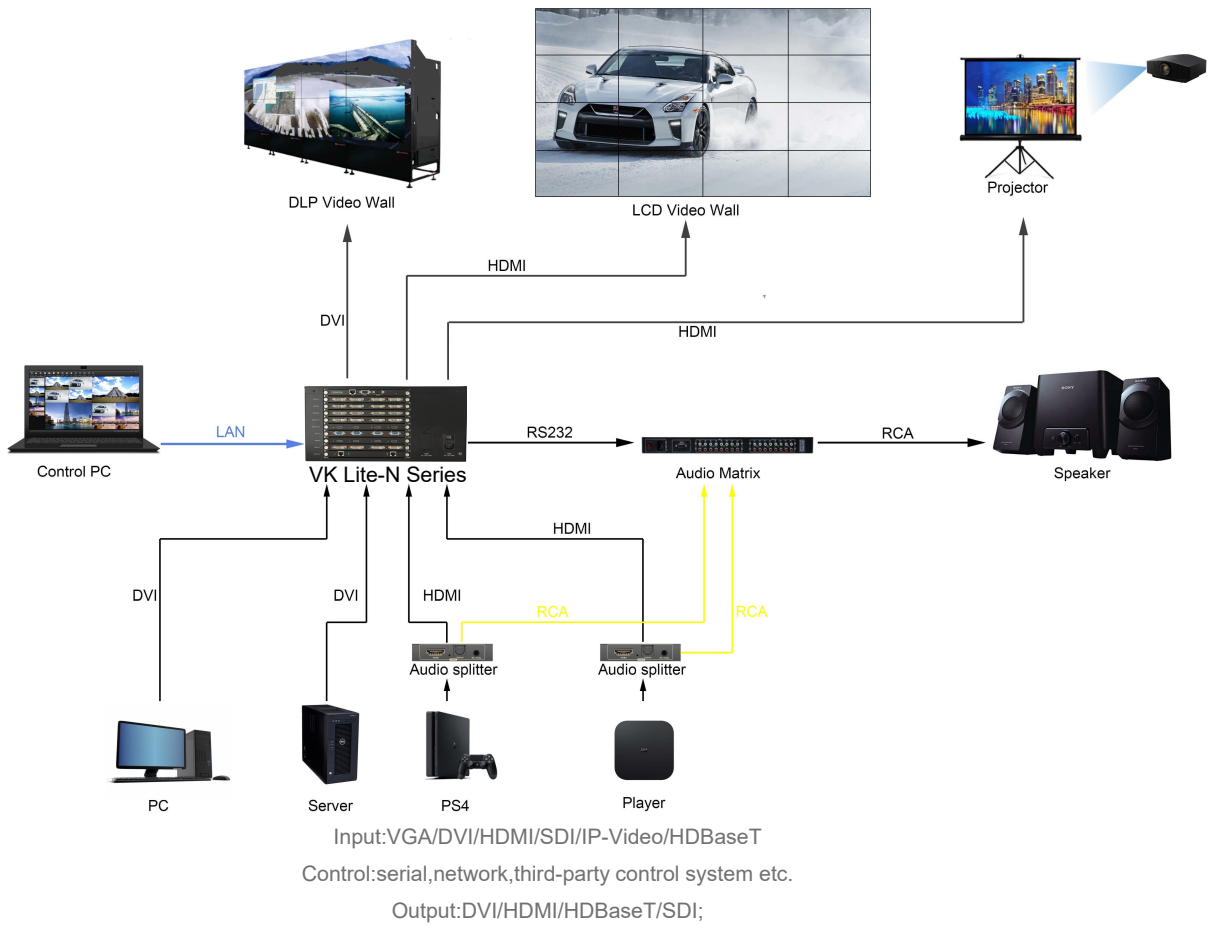


- Signal Clip

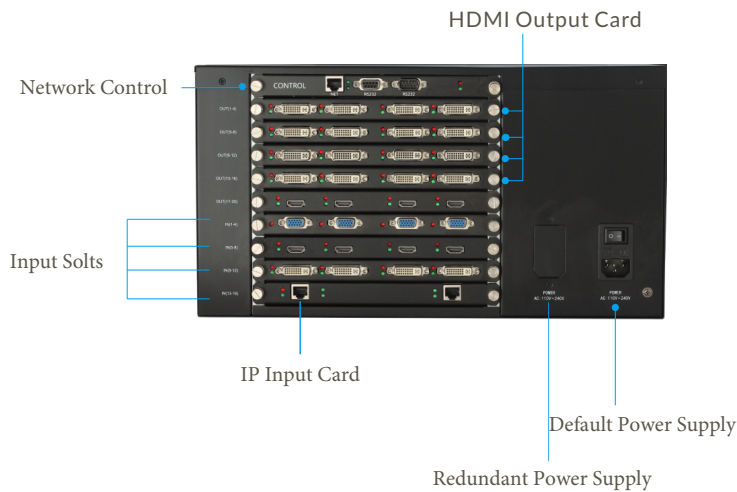


- Multi-group Control

DIAGRAM



PRODUCT STRUCTURE



INPUT CARDS



Quad-Channel DVI Input Card



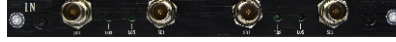
Quad-Channel VGA Input Card



Quad-Channel HDMI Input Card



Dual-Channel IP Input Card



Quad-Channel SDI Input Card



8-Channel CVBS Input Card

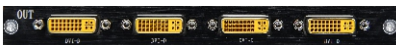


Quad-Channel HDBaseT Input Card



Dual-Channel 4K HDMI Input Card

OUTPUT CARDS



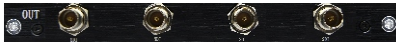
Quad-Channel DVI Output Card



Quad-Channel HDMI Output Card



Quad-Channel HDBaseT Output Card



Quad-Channel SDI Output Card

SPECIFICATIONS

Device size	3U		5U		8U		14U	
	Input	Output	Input	Output	Input	Output	Input	Output
2 Windows / Screen	12	8	16	20	40	36	72	72

Product Hardware Information	System structure	Pure hardware FPGA architecture
	Start up	<8s
	Operating system	No CPU and operating system
	Board type	Pure hardware pluggable,hot-swappable structure
Input/Output Signal	Input type	VGA,DVI,HDMI,CVBS,SDI,HDBaseT,IP-Video
	Input channel	1080P up to 72 channels, 4K up to 36 channels
	Output type	DVI,HDMI,HDBaseT,SDI
Image Processing	Output channel	1080P up to 72 channels
	Display mode	Roaming, overlay, zoom in/out, multi-windowing, scene switch, PIP, full screen and combination screen
	Scene/Signal switching time	Millisecond-level switching
	Number of signal copy	Up to 16
	Max input resolution	3840*2160@30Hz
	Max output resolution Single-screen window	1920*1200@60Hz
	Hot-swappable	Support
	Power supply configuration	Support
Control Function	Signal preview	Support
	Control structure	Software /Hardware
	Maximum scenes	99
	Control method Management mode	RS232/Network and compatible with third party control system
Stability	Safety	Hardware structure, no virus interference
	Continuity	365 days, 7x24 hours operation
Working Environment	Operating temperature	-15~60℃
	Storage temperature	-30~75℃
	Operating humidity	10 to 90% without condensation
	Storage humidity	5~95% without condensation

iSEMC

Beijing Lema Technology Co.,Ltd.

Tel:+86 10 64912688 | Fax:+86 10 64912688

info@isemc.com | www.isemc.com